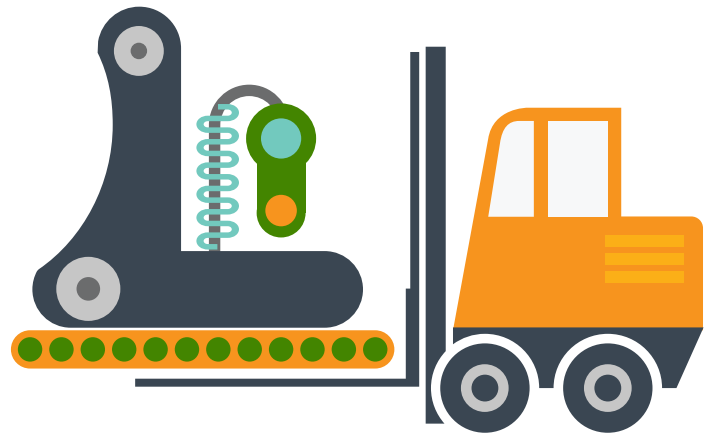


8

WAYS MANUFACTURERS COULD GET CAUGHT OUT BY THE CONSTRUCTION (DESIGN AND MANAGEMENT) REGULATIONS 2015

Will the CDM Regulations 2015 affect you?

1 Moving machinery within the factory



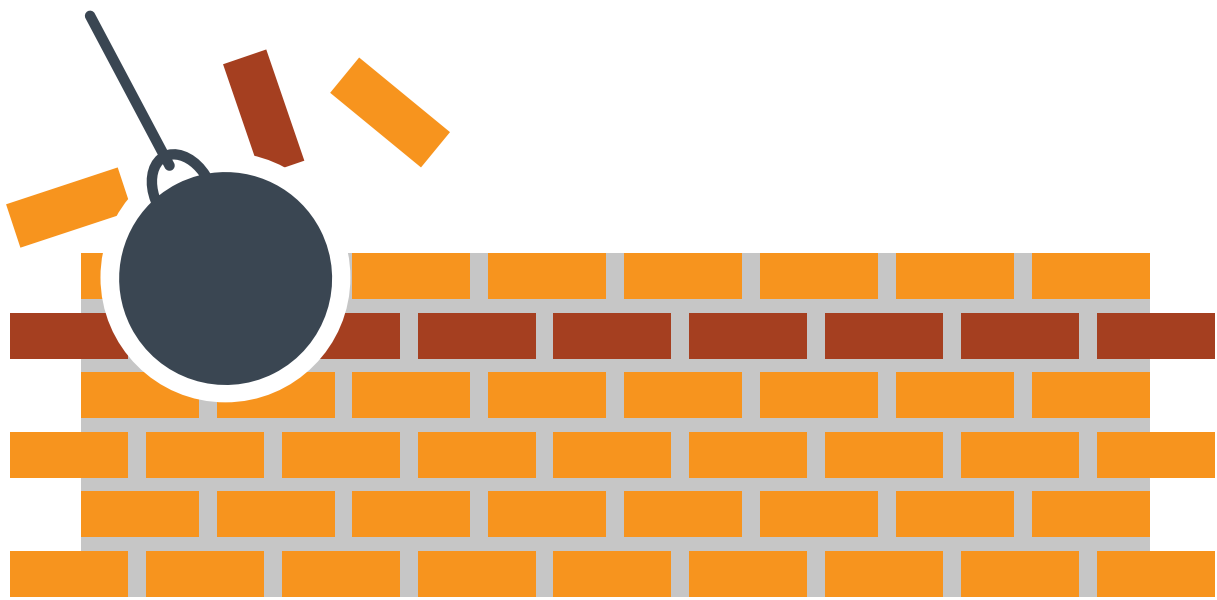
5 Almost anything involving mechanical, electrical, gas, compressed air, hydraulic, telecommunications, computer services including installation, commissioning, maintenance, repair or removal



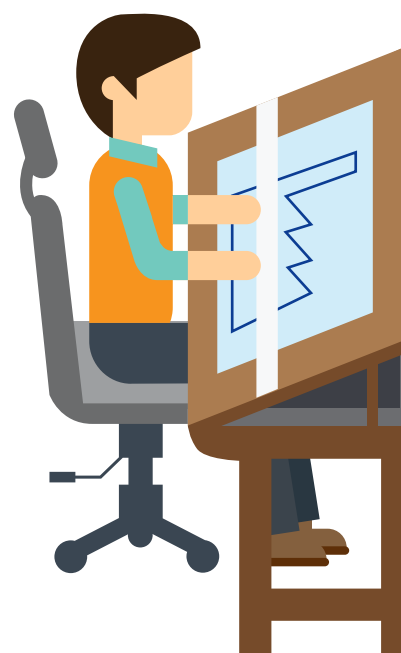
2 Dismantling a machine for repair or refurbishment



3 Creating new working areas by installing (or removing) structures such as walls, additional levels or elevated walkways



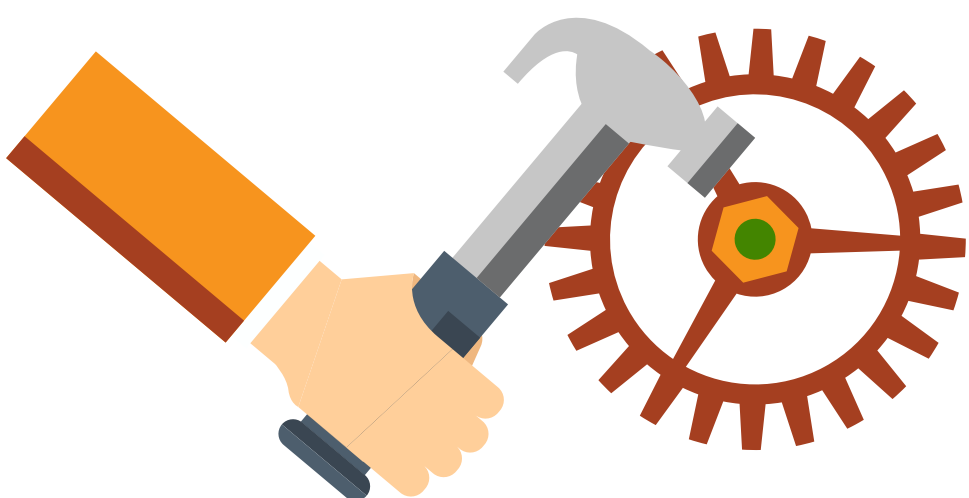
6 Redesigning factory layout



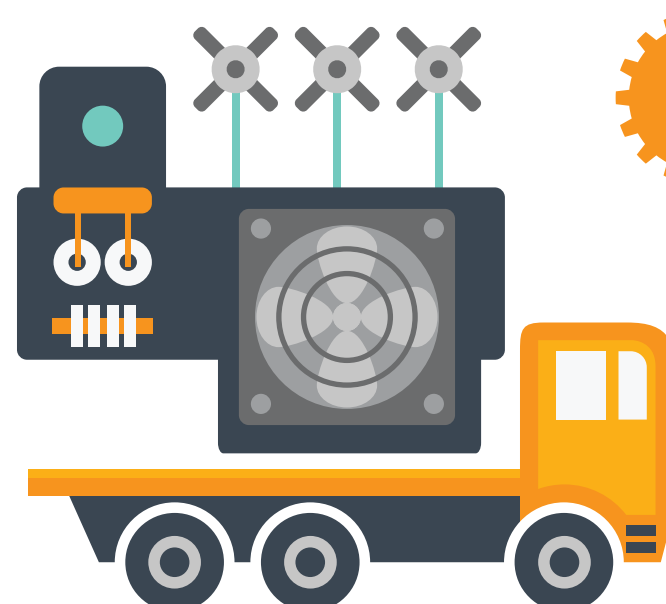
7 Building, or dismantling, an extension



4 Dismantling existing machinery for decommissioning



8 Installing new machinery



The scope of the CDM Regulations 2015 is broad and covers many tasks frequently undertaken in manufacturing. These 8 examples are just a small sample of the projects covered. Make sure you stay compliant, speak to an expert 0808 168 5874

eef

The
manufacturers'
organisation